

ANGLEŠČINA-5.A

8.TEDEN (11.5.-15.5.2020)



Pozdravljeni učenci!

Kako ste?

Upam, da vam ostaja še kaj energije za šolsko delo in da niste izgubili volje v tej neprijetni situaciji. Glede na izdelke, ki jih pošiljate vidim, da vam gre zelo dobro in da naloge res naredite odlično.

Začenjamo že 8. teden pouka na daljavo. Tudi tokrat sem vam pripravila učno snov za cel teden. Tako se boste lažje organizirali in si snov razporedili na dni, ko imate več časa, volje in lažji dostop do računalnikov.

Glede na to, da ste prejšnji teden res imeli veliko nalog, bomo ta teden posvetili le eni: **OPISU MESTA.**

V kolikor kakšne naloge prejšnjega tedna še niste dokončali, lahko to storite še ta teden.

1.) KAKO OPIŠEMO MESTO:

Narisali ste svojo sliko mesta.

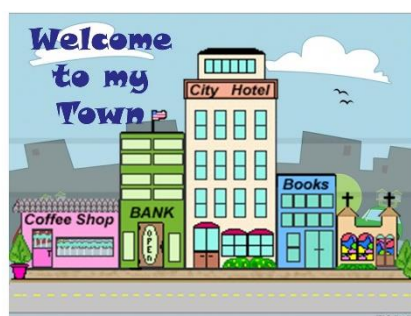
Pri opisu uporabljamo:

THERE IS... (za ednino-ena stavba)

THERE ARE...(za množino-več stavb)

YOU CAN SEE... (Lahko vidimo...)

PREDLOGE: behind (za), next to (poleg), in front of (pred), opposite (nasproti), on the left (na levi), on the right (na desni), on (na), between (med)



OGLEJMO SI PRIMER:

Uporabili bomo sliko iz učbenika, na strani 84 (vaja 4):

This is my town. It is small and nice. (splošen opis)

There are many buildings in my town. **There are** a hospital, a bank, a police station in my town. **You can also see** a castle **on** the hill and a church **behind** the park. **There is** a swimming pool **behind** the school. **There is** a post office **next to** the school. **You can see** a fire station **behind** the post office. **There is** a pet shop **opposite** the police station. **There are** a bookshop and a music school **next to** the pet shop. The library is **behind** the museum. The hotel is **in front of** the zoo. The supermarket is **opposite** the hotel. **You can see** the baker's **on the right**. **You can see** a school **on the left**. The bank is **between** the police station and the information centre...

KAKO TVORIMO POVEDI:

Začnemo z:

- a) **There is** a school next to **the** post office. (Povemo, kaj se v mestu nahaja. Lahko povemo za eno stavbo ali za več. Glede na to uporabimo **IS** ali **ARE**. Povemo tudi, kje ses stavba nahaja, glede na drugo stavbo. Uporabimo predloge.)

Pomembno je, da ne pozabimo na ČLEN: **THE**

ČLEN **THE** JE OBVEZEN PRI PREDLOGIH: The school is next to **the** post office.

b) You can see a school next to the post office.

Povedi poskušamo tvoriti na različne načine:

There are... (naštejemo stavbe).

There is ... (povemo, kje je kakšna stavba, uporabimo predloge: behind, next to, opposite, ...)

You can see... (lahko naštejemo stavbe, lahko povemo, kje se nahajajo)

The school is ... (povemo, kje se nahaja, uporabimo predloge: behind, next to, in front of, ...).

Če želimo opis še obogatiti pa dodamo PRIDEVNIKE:

- old
- new
- beautiful
- tall
- interesting
- small
- big
- famous

PRIMER: There is an old church behind the park. There is a new hotel opposite the library.

Dodamo lahko tudi povedi, ki povedo, kaj se v stavbah počne:

You can buy stamps in the post office.

You can see old things in the museum.

You can read books in the library.

Sedaj pa poskusite opisati vaše mesto.

Vaše izdelke mi prosim pošljite v pregled (če boste uspeli do konca tedna).

2.) PRILAGAM ŠE REŠITVE VAJ PREJŠNJEGA TEDNA.

NALOGA 1:

- the florist's
- gallery
- baker's
- park
- zoo
- bookshop
- library
- pet shop
- school
- supermarket/the grocer's
- museum
- hospital
- post office
- restaurant
- butcher's
- hotel
- swimming pool

NALOGA 2

Predlogi:

- in front of
- on
- behind
- under
- between
- in

Predlogi:

Prvi stolpec: povsod WHERE IS...

Drugi stolpec:

- It is in
- It is next to
- It is in front of
- It is next to
- It is behind
- It is next to
- It is between
- It is on

PRILOŽEN UL

There is ALI there are:

There is

There are

There is

There are

There are

There is

There is

There are

Odgovori:

Yes, there are.

No, there aren't.

No, there isn't.

Yes, there is.

Yes, there are

Yes, there is.

Yes, there are.

No, there isn't.

